

# GENERAL TECHNICAL INFORMATION

## THEATRE DE LIÈGE



*16, Place du 20 Aout (4000 Liège, Belgium)*

General Manager  
RANGONI Serge

Technical manager  
BORLEE Nathalie

## Contact

---

### Technical manager

BORLÉE Nathalie

[n.borlee@theatredeliege.be](mailto:n.borlee@theatredeliege.be)

0032 (0)4 344.71.83

### Stage manager

Deck Manu-

[e.deck@theatredeliege.be](mailto:e.deck@theatredeliege.be)

0032 486632640

### Technical staff

3 stage managers

2 sound masters

3 electrician masters

3 electrician / video masters

2 assistant stage managers

2 trainees in stage management

### Technical schedule (4-hour services)

09.00-13.00 // 14.00-18.00 // 19.00-23.00

### Sewing workshop

0032 (0)4 344.71.94

1 chief seamstress

1 sewing workshop coordinator

2 seamstresses

1 dresser

### Decoration workshop

0032 (0)4 371.94.16

1 head of carpentry workshop

1 decoration workshop coordinator

1 carpenter

1 welder

1 painter

## Salle de la grande main (main auditorium)

---

*The venue is completely renovated from the former théâtre de l'émulation, and can host 557 spectators on a tier placed as if it was a giant hand.*

*In front of the 3<sup>rd</sup> catwalk; there's a possibility to put a black drop to close the venue behind the row N (capacity to host 312 to 328 spectators depending on the pit).*

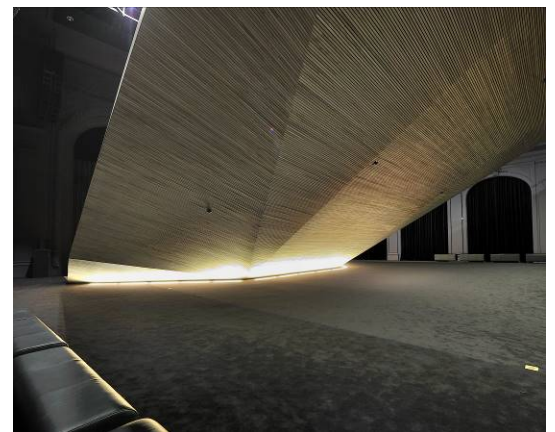
*The set can be put on a ground floor if the pit (30 places) is covered, by doing so we extend our black floor.*

*Visibility:* the palm, which is a little concave, is situated in front of the proscenium, which is perfectly aligned between the edges of the stage. The visibility of the audience is optimal and the proximity fosters a good connection between the stage and the venue.



*The space under the set:* called « creux de la main » (« palm of the hand »), is totally cleared in order to enable a fluid passageway to stage left and stage right.

From the entrance hall, large bay windows offer a clear sight on the courtyard (stage left), enabling natural daylight to illuminate the setting. During the shows, these windows are covered with opaque black legs thanks to a control panel located on stage right.



### *The stage;*

The proscenium opening width is 15 metres.

A first historic proscenium defines the view on the show: 15 metres wide x 10 high.

A second proscenium, located one metre behind the first one, maintains a fire curtain: 15 metres wide x 8 high.

The following parts are placed between these two places:

- The black stage curtain (2 motorized parts)
- The proscenium arch: manually movable. Covers to 1,5 metre on stage left and stage right
- The inner proscenium: motor-driven, maximum height is 7,50 metres and maximum lowness is 5,90 metres

The stage has a matte black colored 400 square metres floor.

### *Equipment (un)loading:*

At stage right, the trucks' entrance gives a ground floor access to the stage. It is possible to park a truck up to 4 metres high.

### *Under the grid:*

Height of the stage under the grid: 17 metres.

Dimension of the stage under the grid: 12 metres deep and 20 metres from wall to wall.

Backstage: 3 metres of additional space, 6 metres high and 2 motor-driven bars. A wall separates the technical reserves and the stage with a 1-metre wide passageway connecting stage left and right.

### *The bars / battens:*

The bars are controlled from a mobile desk with the software UNICAM.

(Loading indication, speed and altimetry are programmable per group)

On stage: 36 variable-speed bars, each 17,5 metres long. They are spaced apart from 30 centimetres and limited to 17 metres high (no. 1 to 36)

- 350 kilograms with a speed of 1,20 metre per second

On stage left and stage right: a side bar limited to 12 metres high

- 250 kilograms with a speed of 0,20 metre per second

Backstage, under the catwalk: a bar limited to 10 metres high (no. 37)

- 350 kilograms, limited to 250 kilograms for a speed of 0,20 metres per second

Backstage, under a height of 6 metres: 2 bars limited to 6,40 metres (no. 38 and 39)

- 250 kilograms for a speed of 0,20 metres per second

In the venue in front of the 3<sup>rd</sup> catwalk: a separator bar up to 11,65 metres high can close the back of the venue behind the row N (capacity of 312 to 328 spectators, depending on the pit).

### *The catwalks:*

Stage left and right: 2 catwalks. The first one is 8 metres high and the second one is 11,70 metres high. The electrical power boxes are distributed on both catwalks.

Backstage: 1 catwalk returns to the second side catwalks.

In the venue: 3 catwalks for the positioning of the lights.

### **Stage equipment:**

*Backdrop:* 1 two-part black drop, 12 metres high x 9 metres long

*Legs:* 18 legs each 12 metres high and 2,4 metres long

*Teasers:*

2x 4 metres high and 17 metres long

6x 3 metres high and 17 metres long

4x 2 metres high and 17 metres long

2x 1 metre high and 17 metres long

*Dancefloor:* total of 340 metres. Matte black, pieces of 1,50 metre

*Folding rostrum:* 30 x 2 x 1 metres

*Cyclorama:* 1x 9 metres high and 17 metres long

### **Lightning instruments:**

*Control board:* ADB Liberty

*Wiring:* 192x 3kw + 24x 5kw (ADB Dimmers)

*Projectors:* ADB, Robert Juliat and Thomas

### **Sound equipment:**

*Control board:* Yamaha LS9 32<sup>nd</sup> version + Yamaha MY16AT soundcard

*Clusters:* Stage left and right: 9 L-Acoustics KARA baffles + 2 L-Acoustics SB18 bass sound backups + centre stage: 2x MTD112

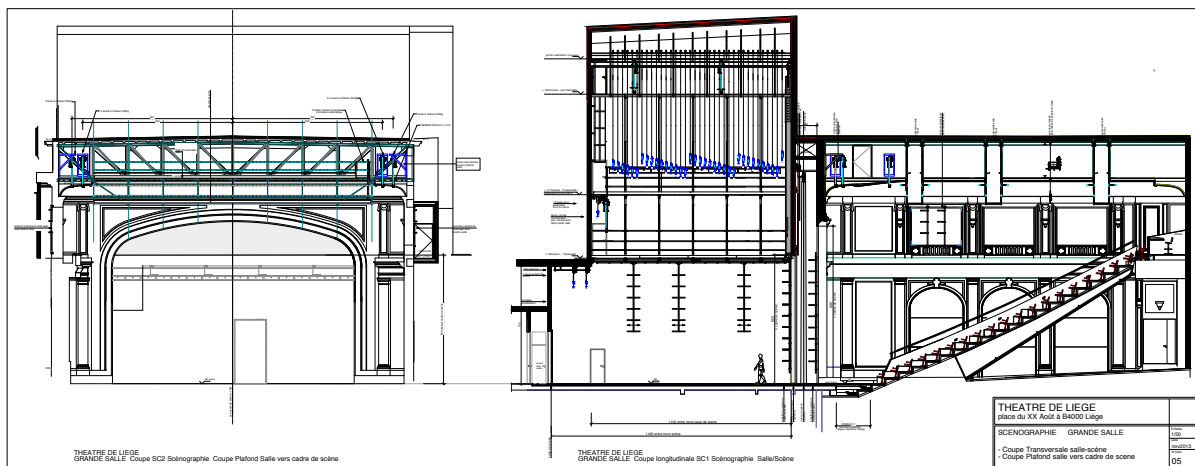
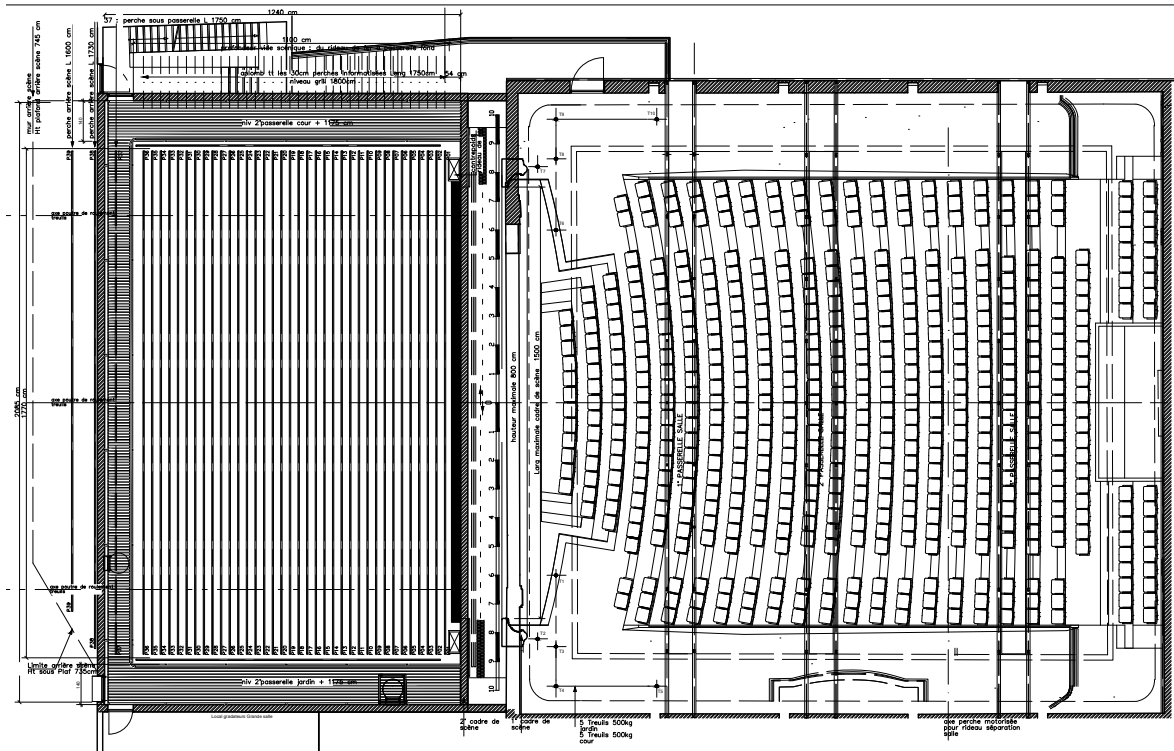
*On the floor:* Stage left and right: 2 L-Acoustics MTD112 baffles + 2 L-Acoustics SB28 bass sound backups

*Microphone:* Sennheiser, Shure, Neumann

**Video equipment:**

*Projector:* Panasonic PT-DW11KE 11 000 ANSI lumens

*Lenses:* 1.8-2.71 : 1 / 2.7-5.2 : 1 / 5.2-8.2 : 1



## Salle de l'œil vert (small auditorium) :

*Venue:* multipurpose space.

Tier retracted: stage 11 metres wide and 15 metres deep.

Tier deployed: stage 11 metres wide and 7,5 metres deep.

Capacity of 146 spectators, possibility to remove the first row (- 16 places).

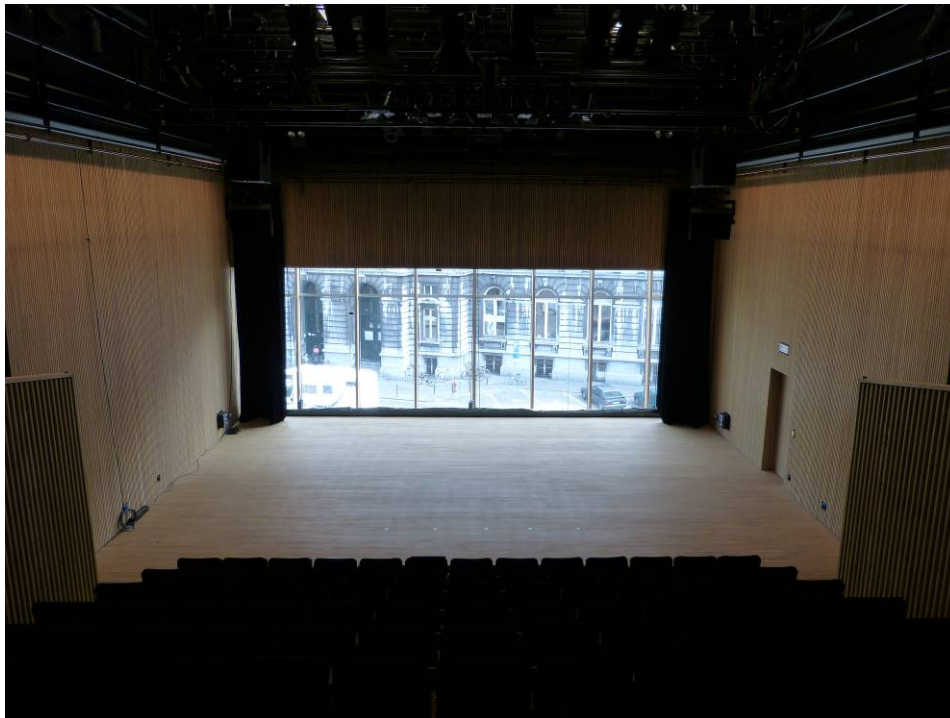
*Visibility:* tier deployed in frontal mode.

*Height under the bars:* 7 metres

*Stage:*

The stage floor is made of untreated oak (screwing forbidden).

Backstage, a large window bay overhangs the Place du 20-Août. A double panel on curtain track enables a total occultation.



*Equipment (un)loading):*

The (un)loading of the stage design takes place at the Rue des Carmes entrance, at the access of the freight elevator. Its dimensions are 2,40 metres long and 3,05 wide, the flat diagonal is 3,80 and the high diagonal is 4,50. On the second floor, there are another 60 metres to go through a corridor of 1,5 metre wide.



### *The bars/battens:*

On stage: 8 computerized bars with non-variable speed, 8,44 metres long.

They move on 3 guiding rails separated by 50 centimetres at least and 7,20 metres at most and come down to maximum 70 centimetres from the floor.

- 500 kilograms for a speed of 12 centimetres per second.

2x bridges each 8 metres long with non-variable speed and moving on 2 guiding rails.

- On 2 motors of 500 kilograms

### *The catwalks:*

At 5,78 metres high, the venue is surrounded by a 1-metre wide technical catwalk.

### **Stage equipment:**

*Backdrop:* 1 two-part black drop, 7 metres high x 6,25 metres long

*Legs:* 12 legs each 7 metres high and 1,2 metre long

*Along the walls on stage left and right on the curtain track:* 8x 5,80 high and 4,80 long

*Teasers:* 6x 1,20 metre high and 9,50 metres long

*Dancefloor:* 4x 1,50 x 11 metres

*Cyclorama:* 1x 7 metres high and 9 metres long

### **Lightning instruments:**

*Control board:* ADB Liberty

*Wiring:* 84x 3kw + 12x 5kw (ADB Dimmers)

*Projectors:* ADB, Robert Juliat and Thomas

### **Sound equipment:**

*Control board:* Yamaha 01v96 + D/A 4 out soundcard

4 L-Acoustics 12P acoustic enclosures

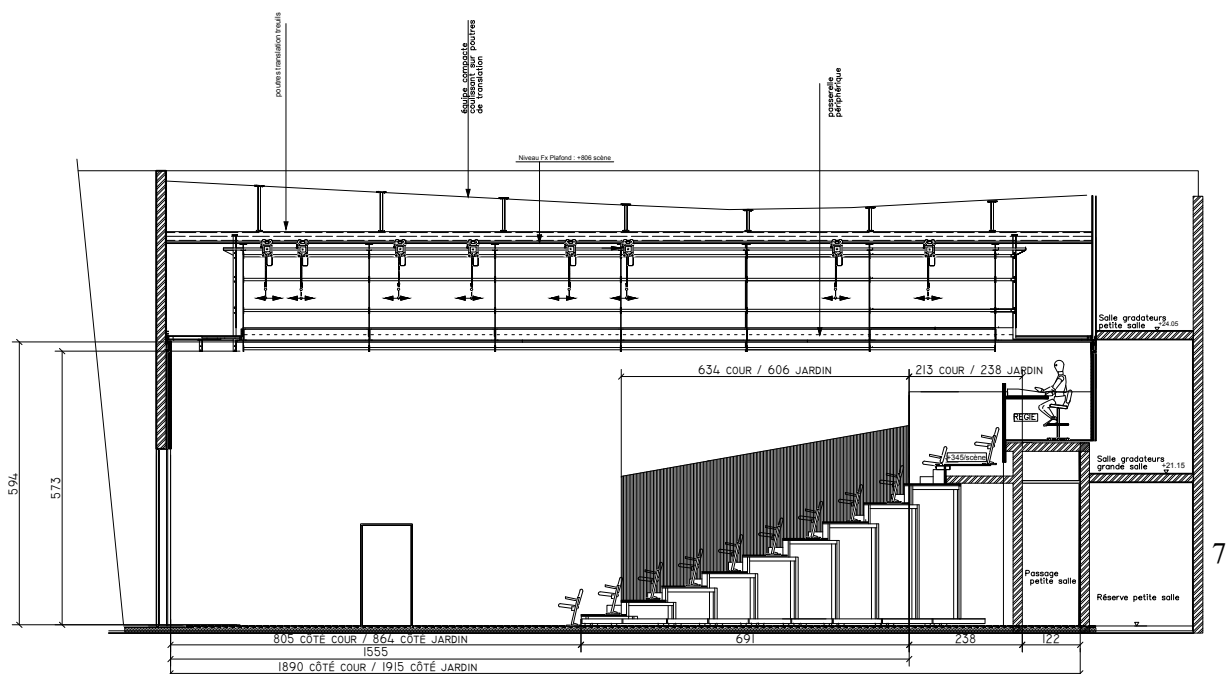
2 L-Acoustics 15P bass sound backups

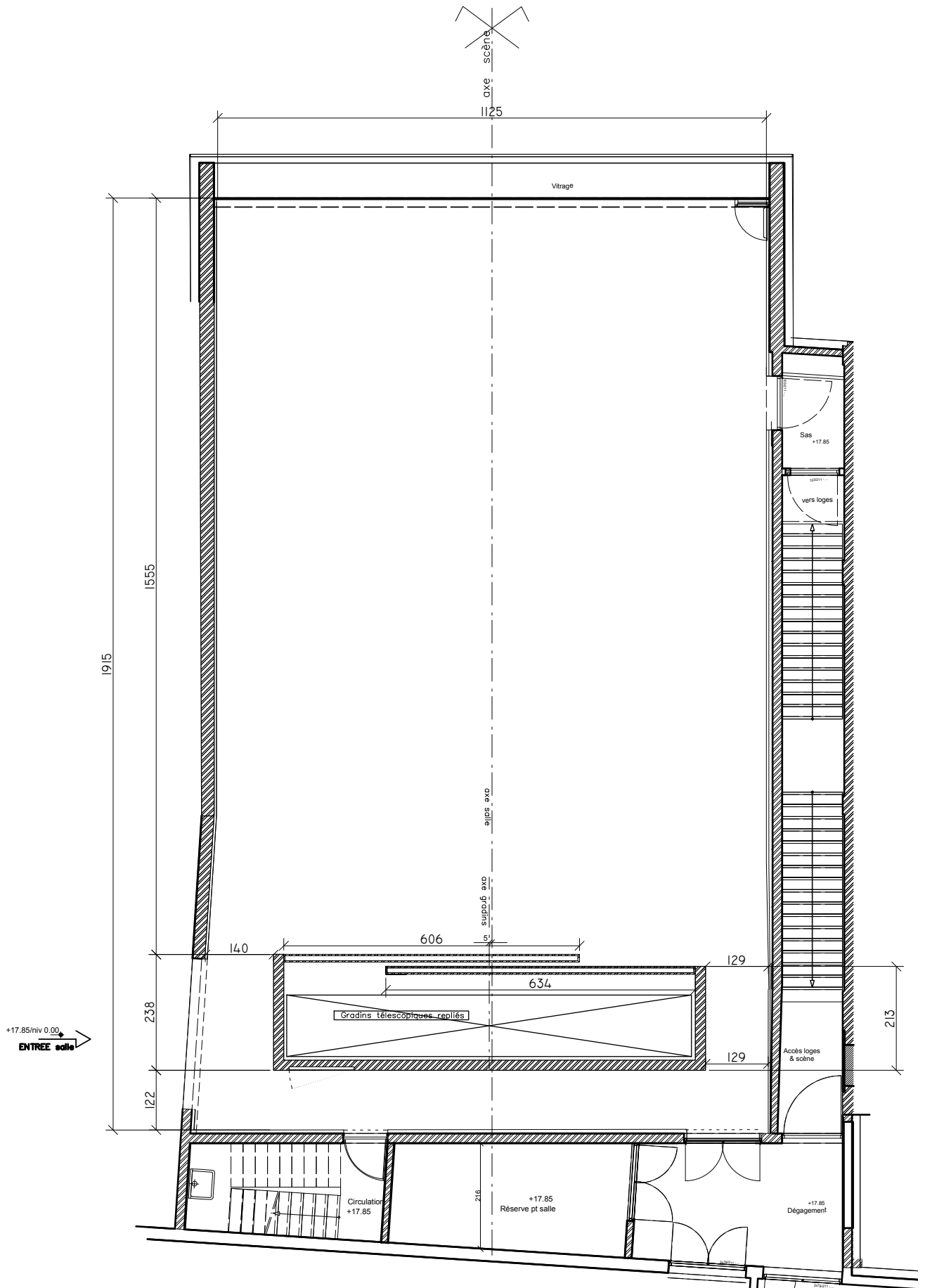
*Microphone:* Sennheiser, Shure, Neumann

### **Video equipment:**

*Projector:* Panasonic D6000ES 6 000 ANSI lumens

*Lenses:* 1.8-2.4 : 1 / 1.3-1.8 : 1 / 085 Lens







## **Salle des nouvelles têtes (rehearsal room) :**

*The venue:* on the 3<sup>rd</sup> floor (technical side), entrance from Rue des Carmes, 8 x 12 metres.

*The stage:* 8 x 8 metres, untreated oak covered with a black dancefloor (screwing forbidden).

*The grid:* fixed. 4,35 metres.

### **Equipment (un)loading:**

The (un)loading of the stage design takes place at the Rue des Carmes entrance, at the access of the freight elevator. Its dimensions are 2,40 metres long and 3,05 wide, the flat diagonal is 3,80 and the high diagonal is 4,50.

### **Stage equipment:**

*Legs:* surrounding the stage (smooth concrete wall)

*Dancefloor:* black dancefloor on untreated oak floor

### **Lightning instruments:**

*Control board:* ADB (on demand)

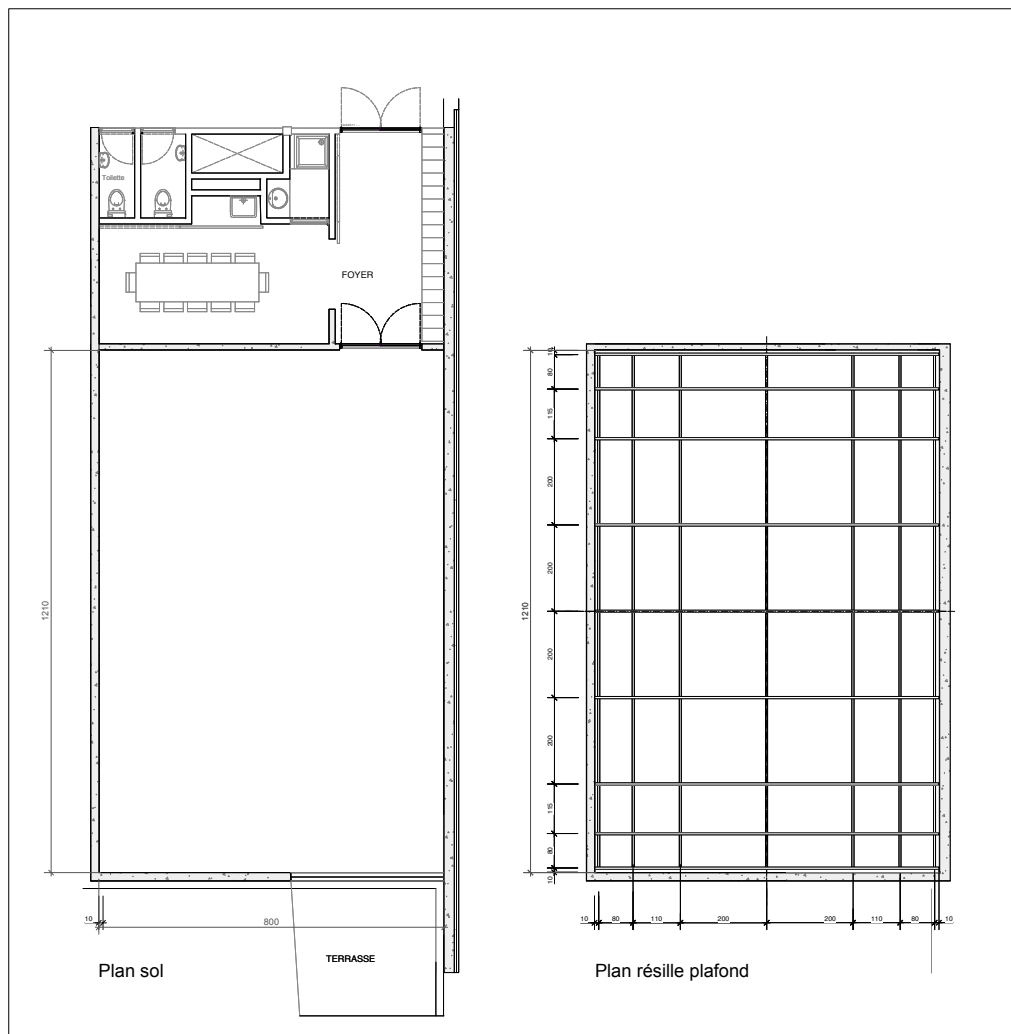
*Wiring:* 24x 3kw (dimmers)

*Projectors:* 30x PC 1200w

### **Sound equipment:**

*Control board:* Soundcraft Spirit F1

*Sound facilities:* 4 L-Acoustics MTD 112 acoustic enclosures



## Dressing rooms

---

The dressing rooms of the Théâtre de Liège are common for the Salle de la Grande Main (main auditorium) and the Salle de l’Oeil vert (small auditorium).

The dressing rooms are located on the 1<sup>st</sup> floor of the theatre, they contain:

- 1 green room
- 1 dressing room: makeup (1 person, without shower)
- 1 dressing room: 1 person (with shower)
- 2 dressing rooms: 2 people (with shower)
- 3 dressing rooms: 4 people (with shower)
- 1 dressing room: 10 people (with shower)
  
- 1 dressing space
  
- 1 laundry room

Only the rehearsal room has its own dressing room, a green room and a shower.  
Same for the working room in Rocourt.



## **The working room (decoration workshop in Rocourt) :**

---

**The working room is situated Rue de la Tonne 80 in 4430 Ans.**

*The venue:* very low ceiling, small frontal tier

*The stage:* 8 x 12 metres, dancefloor.

*The grid:* height under the bridge is 3 metres

The bridge installed is 9 metres wide and deep, including the downstage

*Equipment (un)loading:* accessible behind the tier through a double door.

### **Stage equipment:**

*Legs:* all around the bridge

*Dancefloor:* black

### **Lightning instruments:**

*Control board:* Strand series 300

*Wiring:* 24x 3kw (dimmers) (Power 63A)

*Projectors:* 20x PC 1000w

### **Sound equipment:**

*Control board:* Soundcraft Spirit Folio 8 inputs / 2 outputs / 2 aids

*Sound facilities:* 4 Sandvoice enclosures



**The planning and the requests for staff have to be discussed with the technical management at the latest the month before the arrival of the company.**

**Generally, the company is required to respect the working and security procedures of the Théâtre de Liège.**

**At the latest one month before the event, the company or the theatre have to transmit:**

- **A decoration plan**
- **The request for staff**
- **The planning of this staff**
- **The certificate of fireproofing system**
- **Information about any using of flames, lasers, tricks... (discussion needed upstream)**
- **...**

**These elements have to be approved by the technical management of the Théâtre de Liège**

**Signature**

