



Liège Theater

Technical Rider- April 2026



Technical Director
Emmanuel Deck
e.deck@theatredeliege.be

Deputy Technical Director
Nicolas Gilson
n.gilson@theatredeliege.be

General Information:

Technical hours (4-hour shifts):

09:00–13:00 // 14:00–18:00 // 19:00–22:00

Theatre addresses:

Place du XX aout n° 16 – 4000 Liège (Lorries access for Grande Main)

Rue des Carmes n° 8 – 4000 Liège (Goods lift access)

Rue de la Tonne n°80 – 4430 Ans (Warehouse and workshop access)

Useful contacts:

Direction technique : e.deck@theatredeliege.be / n.gilson@theatredeliege.be

Reception: + 32 (0)4 344 71 60

Production: +32 (0)4 344 71 72

Caretaker: +32 (0)496 442 580

Car park:

There is no car park within the theatre. Parking is available around the theatre via the 4411 app.

Notes:

The schedule and staffing requests must be agreed with the technical management no later than two months before the company's arrival.

In general, the company is required to comply with the working regulations and safety procedures of the Théâtre de Liège.

No later than two months before the event, the company or the theatre must submit:

- A layout plan (set design, lighting, sound & video)
- The staffing request
- The staff schedule
- Fire-retardant certificates
- If open flames, lasers or pyrotechnics are to be used, a technical consultation must take place in advance

These elements must be approved by the technical management of the Théâtre de Liège.

There are no problems; there are only solutions.

The Venues at a glance:

La Grande Main (Main Hall):

Maximum capacity: 557 (open pit) – 527 (pit closed)

Total stage area: 20m wide (wall to wall) x 14m (frame to back wall)

Stage area with double clearance height: 17.50m wide x 12m deep

Clearance height: 17m

Covered garage for semi-trailers (**Maximum heights: 4m**), with direct, level access to the stage.

L'Œil Vert (Small hall):

Retractable seating, maximum seated capacity: 145

Stage: 11,50m (wall-to-wall width) x 7.50m deep

Grid height: 7.20m

No wings

Access via goods lift

Les Nouvelles Têtes (rehearsal room):

Capacity: 0

Stage: 8m x 12m (wall-to-wall)

Fixed single-tube grid, height 4.35m

Access via goods lift

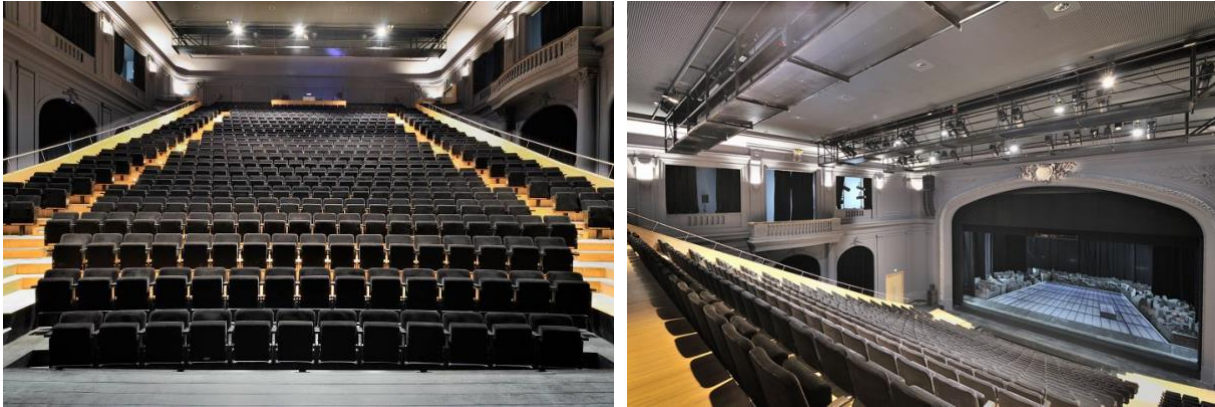
Atelier Rocourt (workspace):

Capacity: 0

Stage: 8m x 12m

Fixed Quadrilight truss grid, height 3m

"Grande Main" Hall



Capacity:
557 pit open
527 with closed pit (removable proscenium)
Option for half-auditorium (closed by curtains)

Single-level stage floor in matt black-stained wood (screw-fixing possible)

Max. load: 500kg/m²

Dimensions of the ^{first}stage frame: 15m x 7.5m

Motorized black stage curtain behind the 1stage frame (Greek-style opening)

False proscenium arch:

- manually mobiles legs of 1.50m
- Motorized border: Max height: 7.50m / Min. height: 5.90m

Iron curtain (no fixed elements may be placed beneath it)

Height under the fly bar: 17m.

Dimensions of the stage with double-height section: 12 m deep by 17.50 m wide.

On stage left and right stage: an additional 1.75 m clearance with a height of 7.50 m.

At the far end: 3 m of additional clearance with a height of 6 m and 2 motorized battens.

Dimmers: 192x 3kw + 24x 5kw (CEE P17 Plug type)

Control desks: Chamsys MQ & Yamaha CL5

Truck entrance with level access to the stage. Space available for a **truck with a maximum height of 4m.**

Truss:

36 flybars (350kg working load limited) with variable speed (max 1,2m/s), length de 17m50.

Spaced 30cm apart, capped at 17m (no. 1 to no. 36)

Stage left and stage right:

- 2 Up-and-down pipes measuring 10.50m, limited to 12m height (WLL 250kg)
- 2 square trusses (30/30) measuring 9 m, mounted on motors with a maximum height of 7 m (WLL 500kg).

At the far end beneath the walkway: one flybar, with a maximum height of 10 m (WLL 350kg)

At the far end beneath the clearance: 2 flybars, capped at 6.40m (WLL 250kg)

3 frontstages catwalks with fixed rigging points + square bridge on motorized hoist in front of the first and second catwalk (WLL 500kg).

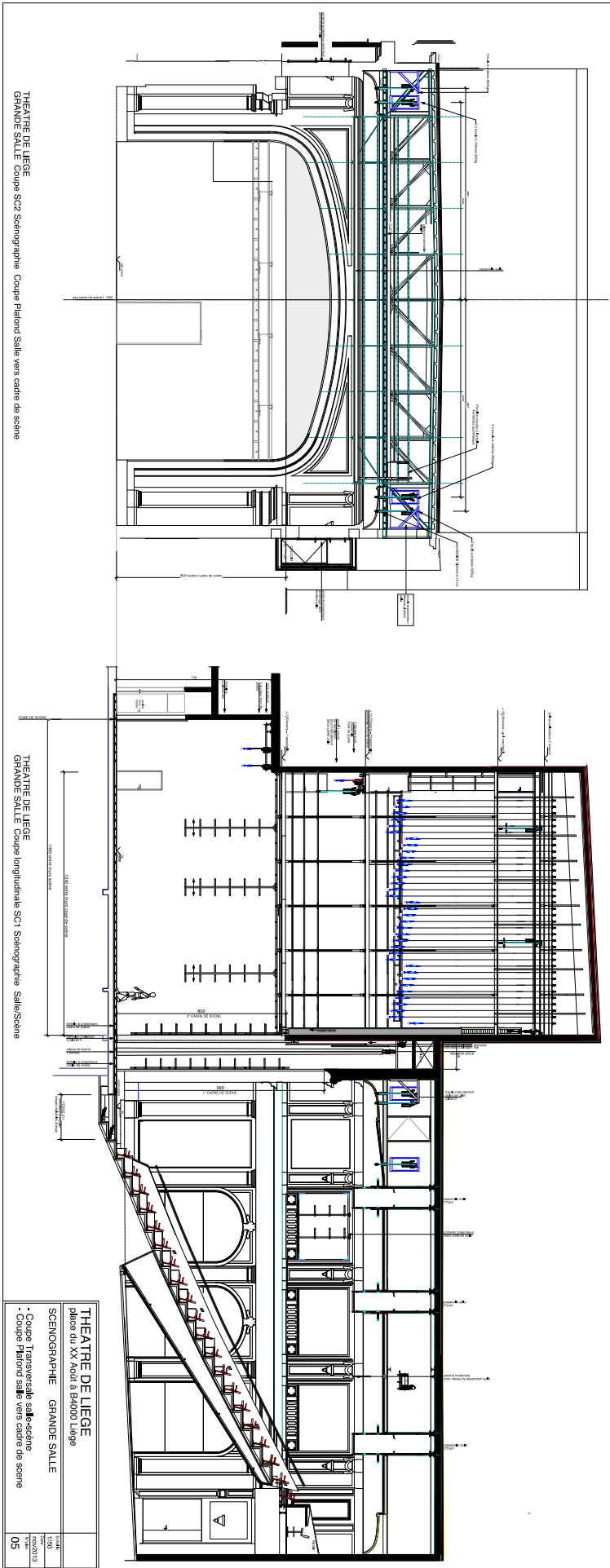
1 motorized flybar between the second and third frontstage catwalks (WLL 350kg).

Control booth:

at the top of the audience, wide open (5m de large).

Option to position the control desks in the center of the audience (2m to 8m wide).

List of equipment available on request

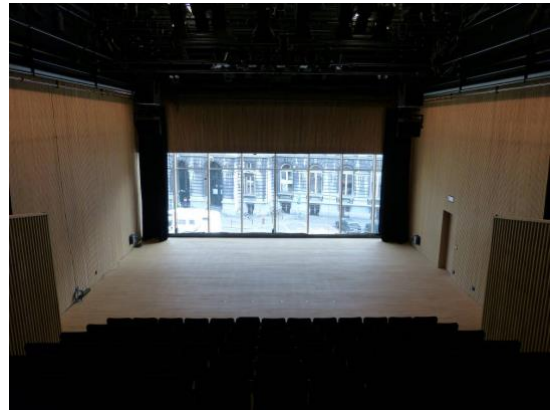


THEATRE DE LIEGE
 GRANDE SALLE Coupe SC2 Sémiographie Coupe Plafond Salle vers cadre de scène

THEATRE DE LIEGE
 GRANDE SALLE Coupe longitudinale SC1 Sémiographie salle/Scène

THEATRE DE LIEGE		1/1000
place du XX Août à 69000 Liège		10/2013
SCENOGRAPHIE	GRANDE SALLE	05
- Coupe Transversale salle-scène		
- Coupe Plafond salle vers cadre de scène		

"Œil Vert" Hall



Multipurpose space with retractable seating:

Without seating: stage 11.50m wide by 15m deep (capacity: 300)

With seating: stage 11.50m wide by 7.50m deep (capacity: 145 seats. The front row may be removable: -16 seats)

Light-colored wooden auditorium with a glass wall at the back of the stage.

Can be completely darkened, black curtains on rails around the perimeter of the stage.

Stage floor in light oak (no screwing permitted).

Dance mats available throughout the stage.

Dimmers: 108 x 3kw + 12 x 5kw

Control desks: Chamsys MQ & Berhinger compact Wing

1 rolled-up projection screen fixed beneath the far catwalk

Truss:

Maximum height under trusses: 7.20m

8 electric pipes, 8.44m long, with free depth adjustment (WLL 500kg)

2 x 8m-long square trusses (30/30) in front with freely adjustable depth (WLL 850kg)

No wings available but can be arranged under the catwalks.

Control room:

Fixed and open at the top of the seats (width: 7.50m)

Loading and unloading of equipment:

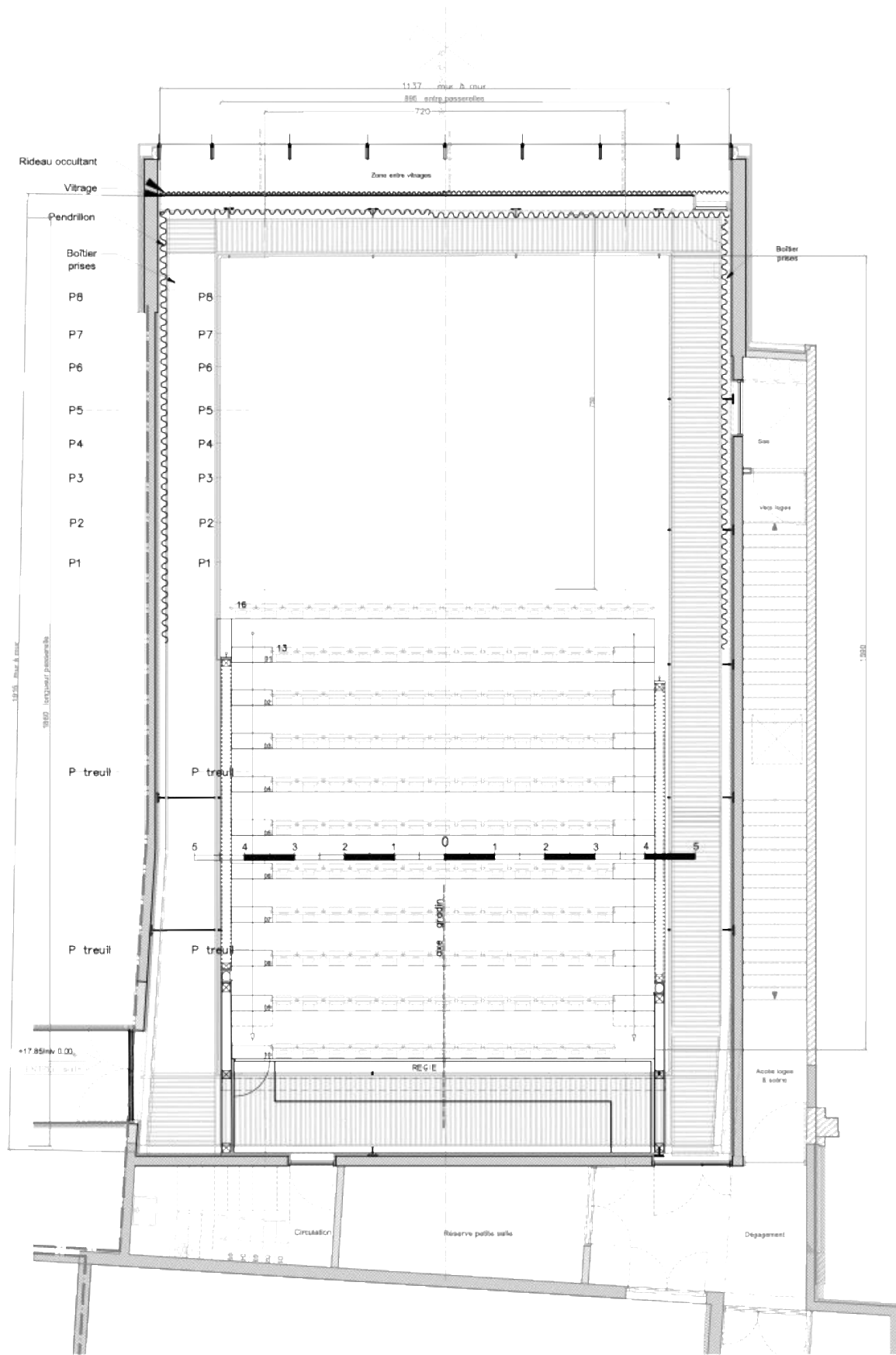
Set loading and unloading takes place on Rue des Carmes, via the goods lift.

Its dimensions are 2.40m long by 3.05m wide, with a flat diagonal of 3.80m and a raised diagonal of 4.50m.

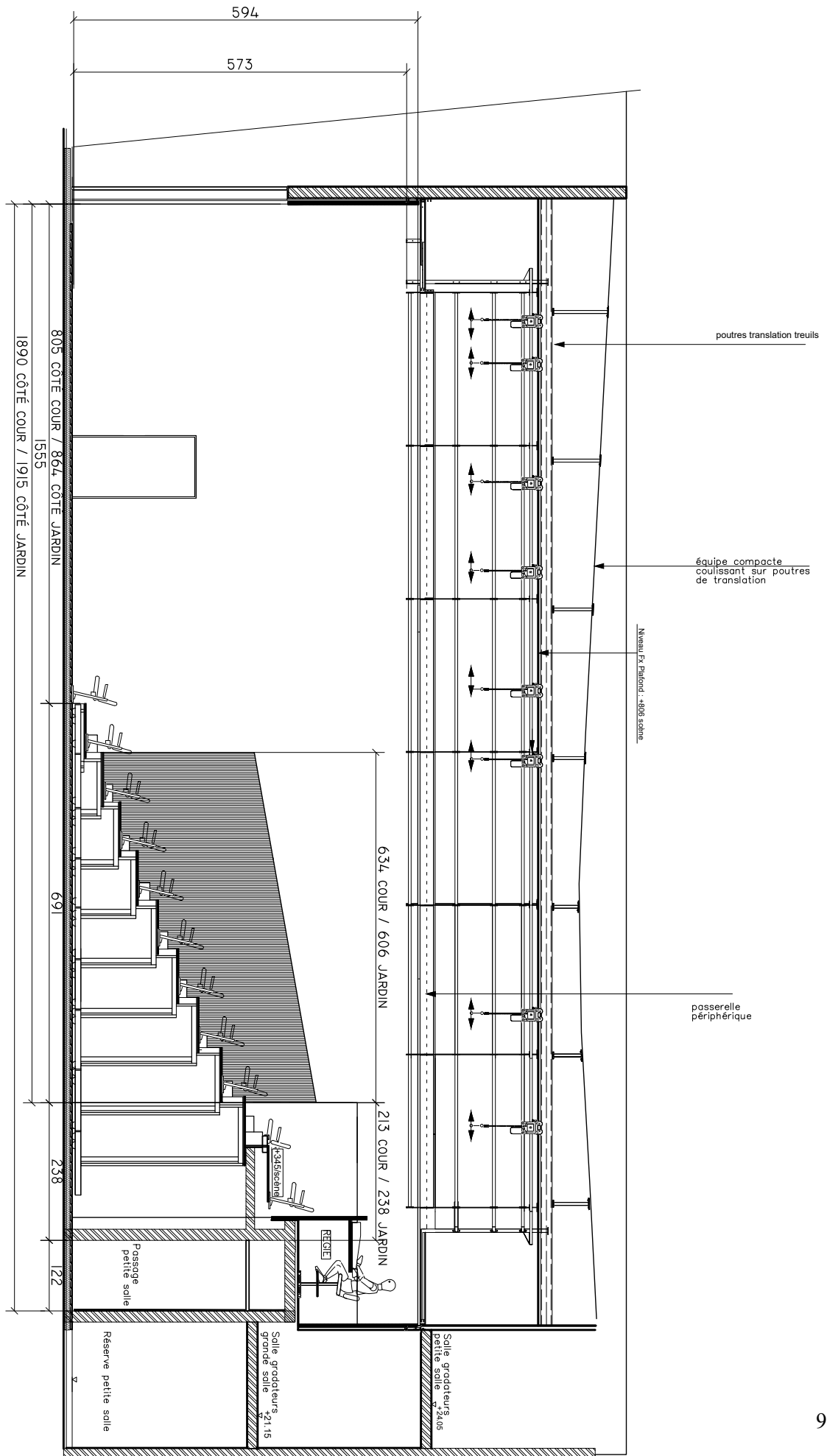
Once on the 2nd floor, there is a further 40m to cover via a 1.5m-wide corridor.



List of equipment available on request



THEATRE DE LIEGE place du Vingt- Août à B4000 Liège	
SALLE DE L'ŒIL VERT niv 2 passerelle scène: +6.07 m Plan levage scène Plan levage salle	Echelle 1/75 Date 2017 N°plan 01



"Nouvelles Têtes" rehearsal room:

A room measuring 8m by 12m from wall to wall.
Raw oak floor covered with black dance mat (no screwing permitted).

Fixed grill, height 4.35m

Loading and unloading of equipment:

Set loading and unloading takes place on Rue des Carmes, via the goods lift.

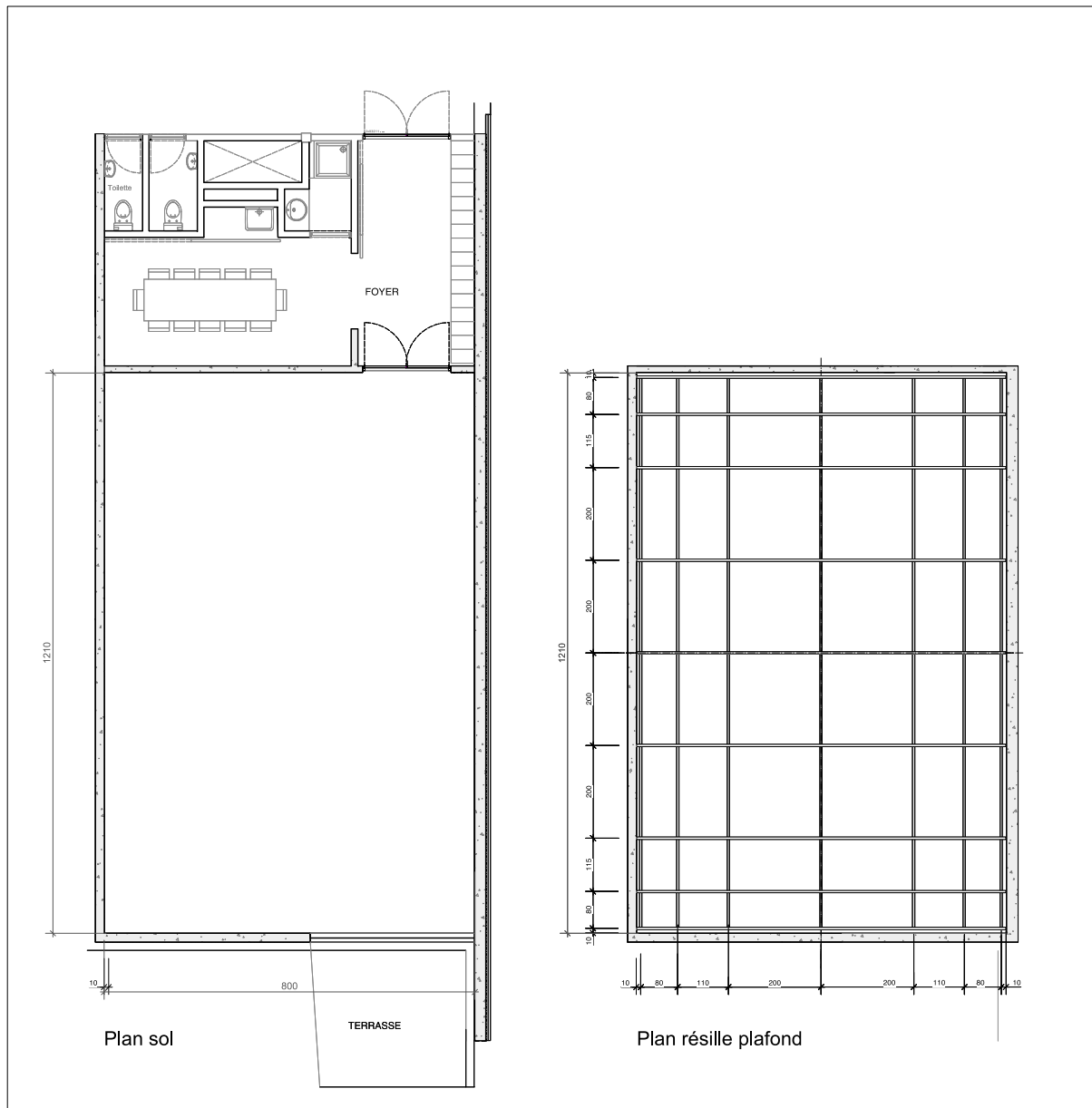
Its dimensions are 2.40m long by 3.05m wide, with a flat diagonal of 3.80m and a raised diagonal of 4.50m.

Black velvet around the entire perimeter of the stage (smooth concrete wall)

Control desk: ADB Mikado & Soundcraft Spirit F1

Dimmers: 24x 3kw

Diffusion: 4 L-Acoustics MTD 112 speakers



The workshop (set design studios in Rocourt):

The workshop is located at 80 Rue de la Tonne (4430 Ans)

Stage measuring 8m by 12m, dance floor + black dance mat.

Height under truss: 3m

Square truss 9m wide by 9m deep including face.

loading/unloading; level access via a double door.

Black velvet around the square truss.

Dimmers: 24x 3kw (Power 63A available)

20x PC 1000w

Soundcraft Spirit Folio 8 inputs / 2 outputs / 2 aux sends

4 Sandvoice speakers